

MYSTIC MOMENTS

CERTIFICATE OF ANALYSIS

Product: CHERRY FRAGRANT OIL
Batch No: 4408807
Best Before End: SEPTEMBER 2023

GENERAL DATA

Appearance VERY PALE YELLOW TO YELLOW LIQUID
Odour CHARACTERISTIC

ANALYTICAL DATA

Flash Point (C) 46
Refractive Index @ 20 C 1.4812
Specific Gravity @ 20C 0.9628

ALLERGEN DECLARATION

We hereby confirm that the following item contains the ingredients listed below. Stated are the total levels added plus levels from natural ingredients. The information is supplied to enable compliance with the Seventh Amendment to the EU Cosmetics Directive (76/768/EEC) and the EU Detergents Directive (648/2004/EC).

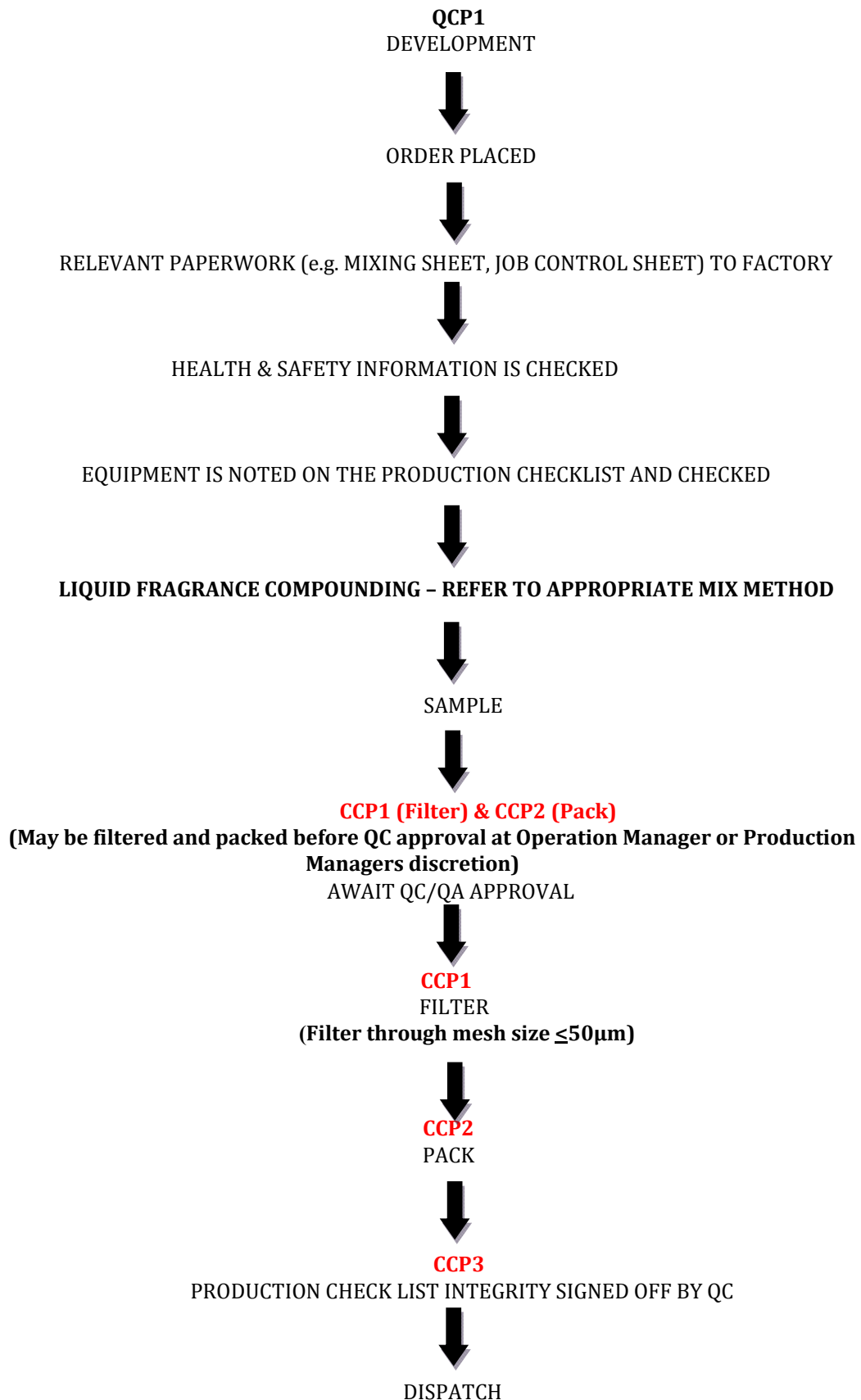
CHERRY

Ingredient	CAS	EC	Concentration (%)
Citral	5392-40-5	226-394-6	0.001%
Eugenol	97-53-0	202-589-1	2%
Limonene	5989-27-5	227-813-5	1.9%
Linalool	78-70-6	201-134-4	8.3%

MYSTIC MOMENTS

FLOW DIAGRAM INDICATING THE CRITICAL CONTROL POINTS

CHERRY FRAGRANCE OIL



MYSTIC MOMENTS

GMO STATEMENT **CHERRY FRAGRANT OIL**

Our Supplier of this product does not knowingly or intentionally use GMO derived materials (according to EC Regulation 1829/2003 and 1830/2003) in the manufacture of their products. It is their policy to only manufacture and sell products that are GMO free within the current limits of detection and in the knowledge that adventitious contamination cannot be excluded.

The company requires from all relevant suppliers, written assurances that materials supplied to our Supplier are free from Genetically Modified Organisms and derivatives thereof. To the best of their knowledge all products manufactured and sold by our Supplier are GMO free.

IFRA CONFORMITY CERTIFICATE

Product: CHERRY FRAGRANT OIL

We certify that the above item is in compliance with the Standards of the INTERNATIONAL FRAGRANCE ASSOCIATION (IFRA - 48th Amendment / published June 2015), provided it is used in the following classes at a maximum concentration level of:

IFRA classes [see annex for detail]	Maximum level of use (%)
IFRA Class 1 Limit	0.04%
IFRA Class 2 Limit	0.04%
IFRA Class 3.A Limit	0.19%
IFRA Class 3.B Limit	0.19%
IFRA Class 3.C Limit	0.19%
IFRA Class 3.D Limit	0.19%
IFRA Class 4.A Limit	0.56%
IFRA Class 4.B Limit	0.56%
IFRA Class 4.C Limit	0.56%
IFRA Class 4.D Limit	0.56%
IFRA Class 5 Limit	0.29%
IFRA Class 6 Limit	0.89%
IFRA Class 7.A Limit	0.1%
IFRA Class 7.B Limit	0.1%
IFRA Class 8.A Limit	1.24%
IFRA Class 8.B Limit	1.24%
IFRA Class 9.A Limit	6.22%
IFRA Class 9.B Limit	6.22%
IFRA Class 9.C Limit	6.22%
IFRA Class 10.A Limit	5.19%
IFRA Class 10.B Limit	5.19%
IFRA Class 11 Limit	100%

IFRA CONFORMITY CERTIFICATE

For other kinds of application or use at higher concentration levels, a new evaluation may be needed; please contact MADAR Corporation Ltd.

The IFRA Standards regarding use restrictions are based on safety assessments by the Panel of Experts of the RESEARCH INSTITUTE FOR FRAGRANCE MATERIALS (RIFM) and are enforced by the IFRA Scientific Committee.

Evaluation of individual Fragrance ingredients is made according to the safety standards contained in the relevant section of the IFRA Code of Practice.

It is the ultimate responsibility of our customer to ensure the safety of the final product (containing this fragrance) by further testing if need be.

Regulatory Affairs Department

IFRA CONFORMITY CERTIFICATE

ANNEX: Definition of IFRA Classes

Finished product types	IFRA class
Lip Products of all types (solid and liquid lipsticks, balms, clear or colored, etc.); Children's Toys	IFRA Class 1 Limit
Deodorant and Antiperspirant Products of all types including any product with intended or reasonably foreseeable use on the axillae or labelled as such (spray, stick, roll-on, under-arm, deo-cologne and body spray, etc.); Nose pore strips; Fragranced Bracelets	IFRA Class 2 Limit
Hydroalcoholic Products Applied To Recently Shaved Skin (includes After Shave) (Edt range)	IFRA Class 3.A Limit
Hydroalcoholic Products Applied To Recently Shaved Skin (includes After Shave) (Fine fragrance range)	IFRA Class 3.B Limit
Eye Products of all types (eye shadow, mascara, eyeliner, eye make-up, etc.) including eye care; Men's Facial Creams and Balms; Baby Creams, Lotions, Oils; Body Paint for Children	IFRA Class 3.C Limit
Tampons	IFRA Class 3.D Limit
Hydroalcoholic Products applied to unshaved skin (includes aqueous based, alcoholic based and hydroalcoholic) like Cologne, eau de cologne, Eau de Parfum or Parfum (Edt range); Ingredients of Perfume Kits; Scent Pads, Foil packs; Scent Strips for hydroalcoholic products	IFRA Class 4.A Limit
Hydroalcoholic Products applied to unshaved skin (includes aqueous based, alcoholic based and hydroalcoholic) like Cologne, eau de cologne, Eau de Parfum or Parfum (Fine fragrance range)	IFRA Class 4.B Limit
Hair Styling Aids Sprays of all types (pumps, aerosol sprays, etc.); Body Creams, Oils, Lotions of all types (except baby creams, lotions and oils); Body sprays (including Body Mist) with no intended or reasonably foreseeable use on the axillae; Fragrance Compounds for Cosmetic Kits; Foot Care Products; Hair deodorant; Body Paint (except those for children)	IFRA Class 4.C Limit
Fragrancing Cream; Solid perfumes	IFRA Class 4.D Limit
Women's Facial Creams/Facial Make-up; Hand Cream; Hand sanitizers; Facial Masks; Baby Powder and Talc; Hair Permanent and other hair chemical treatments (e.g. relaxers) but not hair dyes; Wipes or Refreshing Tissues for Face, Neck, Hands, Body; Dry Shampoo or Waterless Shampoo	IFRA Class 5 Limit
Mouthwash, including Breath Sprays; Toothpaste	IFRA Class 6 Limit
Intimate Wipes; Baby Wipes	IFRA Class 7.A Limit
Insect Repellent (intended to be applied to the skin)	IFRA Class 7.B Limit
Make-up Removers of all types (not including face cleansers); Hair Styling Aids Non-Spray of all types (mousse, gels, leave-in conditioners etc...); Nail Care; All Powders & Talcs (including baby powders and talcs)	IFRA Class 8.A Limit
Hair Dyes	IFRA Class 8.B Limit
Conditioner (Rinse-Off); Liquid Soap; Shampoos of all types (including baby shampoos); Face Cleansers of all types (washes, gels, scrubs, etc.); Shaving Creams of all types (stick, gels, foams, etc.); All Depilatories (including waxes for mechanical hair removal); Body Washes of all types (including baby washes) and Shower Gels of all types; Bar Soap (Toilet Soap); Bath Gels, Foams, Mousses, Salts, Oils and Other Products added to bathwater	IFRA Class 9.A Limit
Feminine hygiene - pads, liners; Toilet paper; Wheat bags	IFRA Class 9.B Limit
Facial tissues; Napkins; Paper towels; 'Other' Aerosols (incl. air freshener sprays and air freshener pump sprays, but not deodorants / antiperspirants, hair styling aids spray and animal sprays)	IFRA Class 9.C Limit
Handwash Laundry Detergents of all types including concentrates; Fabric Softeners of all types including fabric softener sheets; Household Cleaning Products, Other Types (fabric cleaners, soft surface cleaners, carpet cleaners, etc.); Machine Wash Laundry Detergents (liquids, powders, tablets, etc.) including laundry bleach and concentrates; Hand Dishwashing Detergent including concentrates; Hard Surface Cleaners of all types (bathroom and kitchen cleansers, furniture polish, etc.); Shampoos for pets; Dry cleaning kits; Scented gloves, socks, tights with moisturizers	IFRA Class 10.A Limit
Diapers; Toilet seat wipes	IFRA Class 10.B Limit
All non-skin contact or incidental skin contact including: Candles; Air Fresheners and Fragrancing of all types (concentrated aerosol with metered doses (range 0.05-0.5mL/spray), plug-ins, solid substrate, membrane delivery, electrical); Air Delivery Systems; Cell phone cases; Pot pourri, powders, fragrancing sachets, liquid refills for air fresheners (non-cartridge systems), Reed diffusers; Liquid refills for air fresheners (cartridge systems); Shoe Polishes; Deodorizers/Maskers not intended for skin contact (e.g. fabric drying machine deodorizers, carpet powders); Insecticides (mosquito coil, paper, electrical, for clothing etc.) excluding aerosols; Scent delivery system using a dry air technology that releases a fragrance without sprays, aerosols or heated oils (technology of nebulization); Air freshening crystals; Toilet Blocks; Joss Sticks or Incense Sticks; Machine Dishwash Detergent and Deodorizers; Machine-only Laundry Detergent (e.g. liquitabs); Plastic articles (excluding toys); Fuels; Fragranced lamp ring; Scent pack; Scratch and Sniff (sampling technology); Paints; Cat litter; Animal sprays (all types); Treatment products for textiles (e.g. starch sprays, fabric treated with fragrances after wash, deodorizers for textiles or fabrics); Floor wax; Odored Distilled Water (that can be added to steam irons)	IFRA Class 11 Limit

SAFETY DATA SHEET

In accordance with REACH Regulation EC No.1907/2006

PRODUCT: CHERRY FRAGRANT OIL

Version: 2

Section 1. Identification of the substance or the mixture and of the supplier

1.1 Product Identifier

Product identifier: CHERRY

Other identifiers:

1.2 Relevant identified uses of the substance or mixture and uses advised against

Product uses: For manufacturing purposes only.

1.3 Details of the supplier of the safety data sheet

Company name: MADAR Corporation Ltd

Company address: 19-20 Sandealth Industrial Estate

Fordingbridge

Hampshire

SP6 1PA

Approved sellers: Mystic Moments, New Directions, World of Moulds

1.4 Emergency telephone number

Office hours: +44 (0) 1425 653574

Section 2. Hazards identification

2.1 Classification of the substance or mixture

Classification under Directive 1999/45/EC

Hazard symbols: Xn, Harmful.

Risk phrases: R10, Flammable.

R43, May cause sensitisation by skin contact.

R20/22, Harmful by inhalation and if swallowed.

R36/37, Irritating to eyes and respiratory system.

R52/53, Harmful to aquatic organisms, may cause long-term adverse effects in the aquatic environment.

2.2 Label elements

Classification under Directive 1999/45/EC

Hazard symbols: Xn, Harmful.

Risk phrases: R10, Flammable.

R43, May cause sensitisation by skin contact.

19-20 Sandealth Industrial Estate, Fordingbridge, Hampshire, SP6 1PA, UK

Tel: 01425 655555 Email: technical@madarcorporation.co.uk

SAFETY DATA SHEET

In accordance with REACH Regulation EC No.1907/2006

PRODUCT: CHERRY

Version: 2

R20/22, Harmful by inhalation and if swallowed.

R36/37, Irritating to eyes and respiratory system.

R52/53, Harmful to aquatic organisms, may cause long-term adverse effects in the aquatic environment.

Safety phrases:

S24, Avoid contact with the skin.

S26, In case of contact with eyes, rinse immediately with plenty of water and seek medical advice.

S37, Wear suitable gloves.

S61, Avoid release to the environment. Refer to special instructions/safety data sheet.

Symbols:



Other hazards:

Section 3. Composition / information on ingredients

3.2 Mixtures

Contains:

Name	CAS	EC	REACH Registration No.	%	Classification for (DSD) 67/548/EEC	Classification for (CLP) 1272/2008
Benzene carboxaldehyde	100-52-7	202-860-4		25-100%	Xn ; R20/22-R36/37	ATO 4-ATI 4-EDI 2-STO-SE 3(RI);H302-H319-H332-H335,-
3-Methylbutyl butanoate	106-27-4	203-380-8		5-10%	- ; R52/53	FL 3-EH C3;H226-H412,-
Linalool	78-70-6	201-134-4		5-10%	Xi ; R38	SCI 2-EDI 2;H315-H319,-
Eugenol	97-53-0	202-589-1		1-5%	Xi ; R36-R43	EDI 2-SS 1B;H317-H319,-
Limonene	5989-27-5	227-813-5		1-5%	Xn-N ; R10-R38-R43-R65-R50/53	FL 3-SCI 2-SS 1B-AH 1-EH A1-EH C1;H226-H304-H315-H317-H410,-
gamma-Undecalatone	104-67-6	203-225-4		1-5%	N ; R51/53	EH C3;H412,-
4-Hydroxy-3-methoxybenzaldehyde	121-33-5	204-465-2		1-5%	Xi ; R36	EDI 2;H319,-
Ethyl acetate	141-78-6	205-500-4		1-5%	F-Xi ; R11-R36-R66-R67	FL 2-EDI 2-STO-SE 3(NE); H225-H319-H336-EUH066

Substances with Community workplace exposure limits, not listed above:

Name	CAS	EC	%
3-Methyl butyl acetate	123-92-2	204-662-3	15%
Ethyl acetate	141-78-6	205-500-4	1%

SAFETY DATA SHEET

In accordance with REACH Regulation EC No.1907/2006

PRODUCT: CHERRY

Version: 2

Substances that are persistent, bioaccumulative and toxic or very persistent and very bioaccumulative, greater than 0.1%:

Not Applicable

Section 4. First-aid measures

4.1 Description of first aid measures

IF ON SKIN (or hair): Remove/take off immediately all contaminated clothing. Rinse skin with water/shower.

IF INHALED: Remove victim to fresh air and keep at rest in a position comfortable for breathing.

IF IN EYES: Rinse cautiously with water for several minutes. Remove contact lenses, if present and easy to do. Continue rinsing.

Call a POISON CENTRE or doctor/physician if you feel unwell.

4.2 Most important symptoms and effects, both acute and delayed

Causes skin irritation.

May cause an allergic skin reaction.

Causes serious eye irritation.

May cause respiratory irritation.

4.3 Indication of any immediate medical attention and special treatment needed

None expected, see Section 4.1 for further information.

SECTION 5: Firefighting measures

5.1 Extinguishing media

Suitable media: Carbon dioxide, Dry chemical, Foam.

5.2 Special hazards arising from the substance or mixture

In case of fire, may be liberated: Carbon monoxide, Unidentified organic compounds.

5.3 Advice for fire fighters:

In case of insufficient ventilation, wear suitable respiratory equipment.

Section 6. Accidental release measures

6.1 Personal precautions, protective equipment and emergency procedures:

Avoid inhalation. Avoid contact with skin and eyes. See protective measures under Section 7 and 8.

6.2 Environmental precautions:

Keep away from drains, surface and ground water, and soil.

SAFETY DATA SHEET

In accordance with REACH Regulation EC No.1907/2006

PRODUCT: CHERRY

Version: 2

6.3 Methods and material for containment and cleaning up:

Remove ignition sources. Provide adequate ventilation. Avoid excessive inhalation of vapours. Contain spillage immediately by use of sand or inert powder. Dispose of according to local regulations.

6.4 Reference to other sections:

Also refer to sections 8 and 13.

Section 7. Handling and storage

7.1 Precautions for safe handling:

Keep away from heat, sparks, open flames and hot surfaces. - No smoking.

7.2 Conditions for safe storage, including any incompatibilities:

Ground/bond container and receiving equipment. Use only non-sparking tools. Take precautionary measures against static discharge. Store in a well-ventilated place. Keep container tightly closed. Keep cool.

7.3 Specific end use(s):

Use in accordance with good manufacturing and industrial hygiene practices.

Section 8. Exposure controls/personal protection

8.1 Control parameters

Workplace exposure limits:

Ingredient	CAS	EC	Description			Reference
3-Methyl butyl acetate	123-92-2	204-662-3	Long-term exposure limit (8-hour TWA reference period)	50.00000	270.00000	UK EH40 JUN 2012
			Short-term exposure limit (15-minute reference period)	100.00000	540.00000	UK EH40 JUN 2012
Ethyl acetate	141-78-6	205-500-4	Long-term exposure limit (8-hour TWA reference period)	200.00000	-	UK EH40 JUN 2012
			Short-term exposure limit (15-minute reference period)	400.00000	-	UK EH40 JUN 2012

8.2 Exposure Controls

Eye / Skin Protection

Wear protective gloves/eye protection/face protection

Respiratory Protection

Ensure adequate and ongoing ventilation is maintained in order to prevent build up of excessive vapour and to ensure occupational exposure limits are adhered to. If appropriate, and depending on your patterns and volumes of use, the following engineering controls may be required as additional protective measures: a) Isolate mixing rooms and other areas where this material is used or openly handled. Maintain these areas under negative air pressure relative to the

SAFETY DATA SHEET

In accordance with REACH Regulation EC No.1907/2006

PRODUCT: CHERRY

Version: 2

rest of the plant. b) Employ the use of Personal protective equipment - an approved, properly fitted respirator with organic vapour cartridges or canisters and particulate filters. c) Use local exhaust ventilation around open tanks and other open sources of potential exposures in order to avoid excessive inhalation, including places where this material is openly weighed or measured. In addition, use general dilution ventilation of the work area to eliminate or reduce possible worker exposures. d) Use closed systems for transferring and processing this material.

Also refer to Sections 2 and 7.

Section 9. Physical and chemical properties

9.1 Information on basic physical and chemical properties

Appearance:	Very Pale Yellow To Yellow Liquid
Odour:	Characteristic
pH:	Not determined
Initial boiling point / range:	Not determined
Flash point:	46 °C
Vapour pressure:	Not determined
Relative density:	0.9570 - 0.9690
Solubility(ies):	Not determined

9.2 Other information: None available

Section 10. Stability and reactivity

10.1 Reactivity:

Presents no significant reactivity hazard, by itself or in contact with water.

10.2 Chemical stability:

Good stability under normal storage conditions.

10.3 Possibility of hazardous reactions:

Not expected under normal conditions of use.

10.4 Conditions to avoid:

Avoid extreme heat.

10.5 Incompatible materials:

Avoid contact with strong acids, alkalis or oxidising agents.

10.6 Hazardous decomposition products:

Not expected.

Section 11. Toxicological information

SAFETY DATA SHEET

In accordance with REACH Regulation EC No.1907/2006

PRODUCT: CHERRY

Version: 2

11.1 Information on toxicological effects

This mixture has not been tested as a whole for health effects. The health effects have been calculated using the conventional method outlined in Article 6(1)(a) of Directive 1999/45/EC, in accordance with Regulation (EC) No 1907/2006 (REACH). In addition, toxicity information for the mixture, if available, is provided below in accordance with methods given in Regulation (EC) No 1272/2008.

Assumed Toxicity Value (LD50 or ATE) for Acute Oral Toxicity: 2036.57
Assumed Toxicity Value (LD50 or ATE) for Acute Dermal Toxicity: 5186.72
Assumed Toxicity Value (LC50 or ATE) for Acute Inhalation Toxicity: Not Available
Inhalation Route: Not Available

Information about hazardous ingredients in the mixture

Ingredient	CAS	EC	LD50/ATE Oral	LD50/ATE Dermal	LC50/ATE Inhalation	LC50 Route
Benzene carboxaldehyde	100-52-7	202-860-4	1100	2500	11	Not available

Refer to Sections 2 and 3 for additional information.

Section 12. Ecological information

12.1 Toxicity:

Harmful to aquatic organisms, may cause long-term adverse effects in the aquatic environment.

12.2 Persistence and degradability: Not available

12.3 Bioaccumulative potential: Not available

12.4 Mobility in soil: Not available

12.5 Results of PBT and vPvB assessment:

This substance does not meet the PBT/vPvB criteria of REACH, annex XIII.

12.6 Other adverse effects:

This material contains *% Volatile Organic Compounds. : 73.515 %

Section 13. Disposal considerations

13.1 Waste treatment methods:

Dispose of in accordance with local regulations. Avoid disposing into drainage systems and into the environment. Empty containers should be taken to an approved waste handling site for recycling or disposal.

Section 14. Transport information

14.1 UN number: UN1169

14.2 UN Proper Shipping Name: EXTRACTS, AROMATIC, LIQUID

14.3 Transport hazard class(es): 3

19-20 Sande Heath Industrial Estate, Fordingbridge, Hampshire, SP6 1PA, UK

Tel: 01425 655555 Email: technical@madarcorporation.co.uk

SAFETY DATA SHEET

In accordance with REACH Regulation EC No.1907/2006

PRODUCT: CHERRY

Version: 2

Sub Risk: -

14.4. Packing Group: III

14.5 Environmental hazards: Not environmentally hazardous for transport

14.6 Special precautions for user: None additional

14.7 Transport in bulk according to Annex II of MARPOL73/78 and the IBC Code:

Not applicable

Section 15. Regulatory information

15.1 Safety, health and environmental regulations/legislation specific for the substance or mixture

None additional

15.2 Chemical Safety Assessment

A Chemical Safety Assessment has not been carried out for this product.

Section 16. Other information

Classification under Regulation (EC) No 1272/2008

Class and category of danger: Flammable Liquid, Hazard Category 3
 Skin Corrosion / Irritation Category 2
 Eye Damage / Irritation Category 2
 Sensitization - Skin Category 1
 Specific Target Organ Toxicity (Single Exposure) Category 3
 Hazardous to the Aquatic Environment - Long-term Hazard Category 3

Signal word: Warning

Hazard statements: H226, Flammable liquid and vapour.
 H315, Causes skin irritation.
 H317, May cause an allergic skin reaction.
 H319, Causes serious eye irritation.
 H335, May cause respiratory irritation.
 H412, Harmful to aquatic life with long lasting effects.

Supplemental Information:

Precautionary statements: P210, Keep away from heat, sparks, open flames and hot surfaces. - No smoking.
 P240, Ground/bond container and receiving equipment.
 P241, Use explosion-proof electrical, ventilating and lighting equipment.
 P242, Use only non-sparking tools.
 P243, Take precautionary measures against static discharge.
 P261, Avoid breathing vapour or dust.

SAFETY DATA SHEET

In accordance with REACH Regulation EC No.1907/2006

PRODUCT: CHERRY

Version: 2

P264, Wash hands and other contacted skin thoroughly after handling.
 P271, Use only outdoors or in a well-ventilated area.
 P272, Contaminated work clothing should not be allowed out of the workplace.
 P273, Avoid release to the environment.
 P280, Wear protective gloves/eye protection/face protection.
 P303/361/353, IF ON SKIN (or hair): Remove/take off immediately all contaminated clothing. Rinse skin with water/shower.
 P304/340, IF INHALED: Remove victim to fresh air and keep at rest in a position comfortable for breathing.
 P305/351/338, IF IN EYES: Rinse cautiously with water for several minutes. Remove contact lenses, if present and easy to do. Continue rinsing.
 P312, Call a POISON CENTRE or doctor/physician if you feel unwell.
 P333/313, If skin irritation or rash occurs: Get medical advice/attention.
 P337/313, If eye irritation persists: Get medical advice/attention.
 P362, Take off contaminated clothing and wash before reuse.
 P370/378, In case of fire: Use carbon dioxide, dry chemical, foam for extinction.
 P403/233/235, Store in a well-ventilated place. Keep container tightly closed. Keep cool.
 P405, Store locked up.
 P501, Dispose of contents/container to approved disposal site, in accordance with local regulations.

Pictograms:



Key to revisions:

Hazardous Ingredients disclosed in a CLP Safety Data Sheet

Ingredients with an Occupational Exposure Limit disclosed on a CLP Safety Data Sheet

Key to abbreviations:

Abbreviation	Meaning
AH 1	Aspiration Hazard Category 1
ATI 4	Acute Toxicity - Inhalation Category 4
ATO 4	Acute Toxicity - Oral Category 4
EDI 2	Eye Damage / Irritation Category 2
EH A1	Hazardous to the Aquatic Environment - Acute Hazard Category 1
EH C1	Hazardous to the Aquatic Environment - Long-term Hazard Category 1
EH C3	Hazardous to the Aquatic Environment - Long-term Hazard Category 3
EUH066	Repeated exposure may cause skin dryness or cracking.
FL 2	Flammable Liquid, Hazard Category 2
FL 3	Flammable Liquid, Hazard Category 3

SAFETY DATA SHEET

In accordance with REACH Regulation EC No.1907/2006

PRODUCT: CHERRY

Version: 2

H225	Highly flammable liquid and vapour.
H226	Flammable liquid and vapour.
H302	Harmful if swallowed.
H304	May be fatal if swallowed and enters airways.
H315	Causes skin irritation.
H317	May cause an allergic skin reaction.
H319	Causes serious eye irritation.
H332	Harmful if inhaled.
H335	May cause respiratory irritation.
H336	May cause drowsiness or dizziness.
H410	Very toxic to aquatic life with long lasting effects.
H412	Harmful to aquatic life with long lasting effects.
P210	Keep away from heat, sparks, open flames and hot surfaces. - No smoking.
P233	Keep container tightly closed.
P240	Ground/bond container and receiving equipment.
P241	Use explosion-proof electrical, ventilating and lighting equipment.
P242	Use only non-sparking tools.
P243	Take precautionary measures against static discharge.
P261	Avoid breathing vapour or dust.
P264	Wash hands and other contacted skin thoroughly after handling.
P270	Do not eat, drink or smoke when using this product.
P271	Use only outdoors or in a well-ventilated area.
P272	Contaminated work clothing should not be allowed out of the workplace.
P273	Avoid release to the environment.
P280	Wear protective gloves/eye protection/face protection.
P301/310	IF SWALLOWED: Immediately call a POISON CENTER or doctor/physician.
P301/312	IF SWALLOWED: call a POISON CENTER or doctor/physician if you feel unwell.
P302/352	IF ON SKIN: Wash with plenty of soap and water.
P303/361/353	IF ON SKIN (or hair): Remove/take off immediately all contaminated clothing. Rinse skin with water/shower.
P304/340	IF INHALED: Remove victim to fresh air and keep at rest in a position comfortable for breathing.
P305/351/338	IF IN EYES: Rinse cautiously with water for several minutes. Remove contact lenses, if present and easy to do. Continue rinsing.
P312	Call a POISON CENTRE or doctor/physician if you feel unwell.
P330	Rinse mouth.
P331	Do not induce vomiting.
P332/313	If skin irritation occurs: Get medical advice/attention.
P333/313	If skin irritation or rash occurs: Get medical advice/attention.
P337/313	If eye irritation persists: Get medical advice/attention.
P362	Take off contaminated clothing and wash before reuse.
P363	Wash contaminated clothing before reuse.
P370/378	In case of fire: Use carbon dioxide, dry chemical, foam for extinction.
P391	Collect spillage.

SAFETY DATA SHEET

In accordance with REACH Regulation EC No.1907/2006

PRODUCT: CHERRY

Version: 2

P403/233/235	Store in a well-ventilated place. Keep container tightly closed. Keep cool.
P403/235	Store in a well-ventilated place. Keep cool.
P405	Store locked up.
P501	Dispose of contents/container to approved disposal site, in accordance with local regulations.
SCI 2	Skin Corrosion / Irritation Category 2
SS 1B	Sensitization - Skin Category 1B
STO-SE 3(NE)	Specific Target Organ Toxicity (Single Exposure) Category 3
STO-SE 3(RI)	Specific Target Organ Toxicity (Single Exposure) Category 3

This material has not been evaluated for safe use in e-cigarettes. Therefore Ungerer Ltd do not currently support use in this particular application.

The information in this safety data sheet is to the best of our knowledge true and accurate but all data, instructions, recommendations and/or suggestions are made without guarantee

SPECIFICATION

Product: CHERRY

GENERAL DATA

Odour: Characteristic
Appearance: Very Pale Yellow To Yellow Liquid

ANALYTICAL DATA

Flash Point: 46 °C
Flash Point (Fahrenheit): 115 °F
Specific Gravity @ 20°C: 0.9570 - 0.9690
Refractive Index @ 20°C: 1.4750 - 1.4870

STORAGE AND HANDLING

STORAGE: Store in well-sealed containers in cool, dry, dark place. Ideal temperature between 15-25°C (59-77°F). It is not recommended to store this material below 10°C or above 25°C.

This document was processed automatically and therefore has no signature

MYSTIC MOMENTS

Vegetarian & Vegan Suitability Statement

PRODUCT NAME: CHERRY FRAGRANCE

MADAR Corporation Limited can confirm that the above listed product has not been tested in animals and does not contain dairy or any other animal product, by product or derivative and is therefore suitable for vegetarian and vegan use.

25/07/19